

BLICKMAN



Cannabis Lab Equipment

Sterile, customizable environment

Includes:

- Cabinets and Casework
- Stools
- Foot Stools
- Scrub Sinks
- Tables
- Utility Carts
- Warming Cabinets

BLICKMAN



Cabinets & Casework

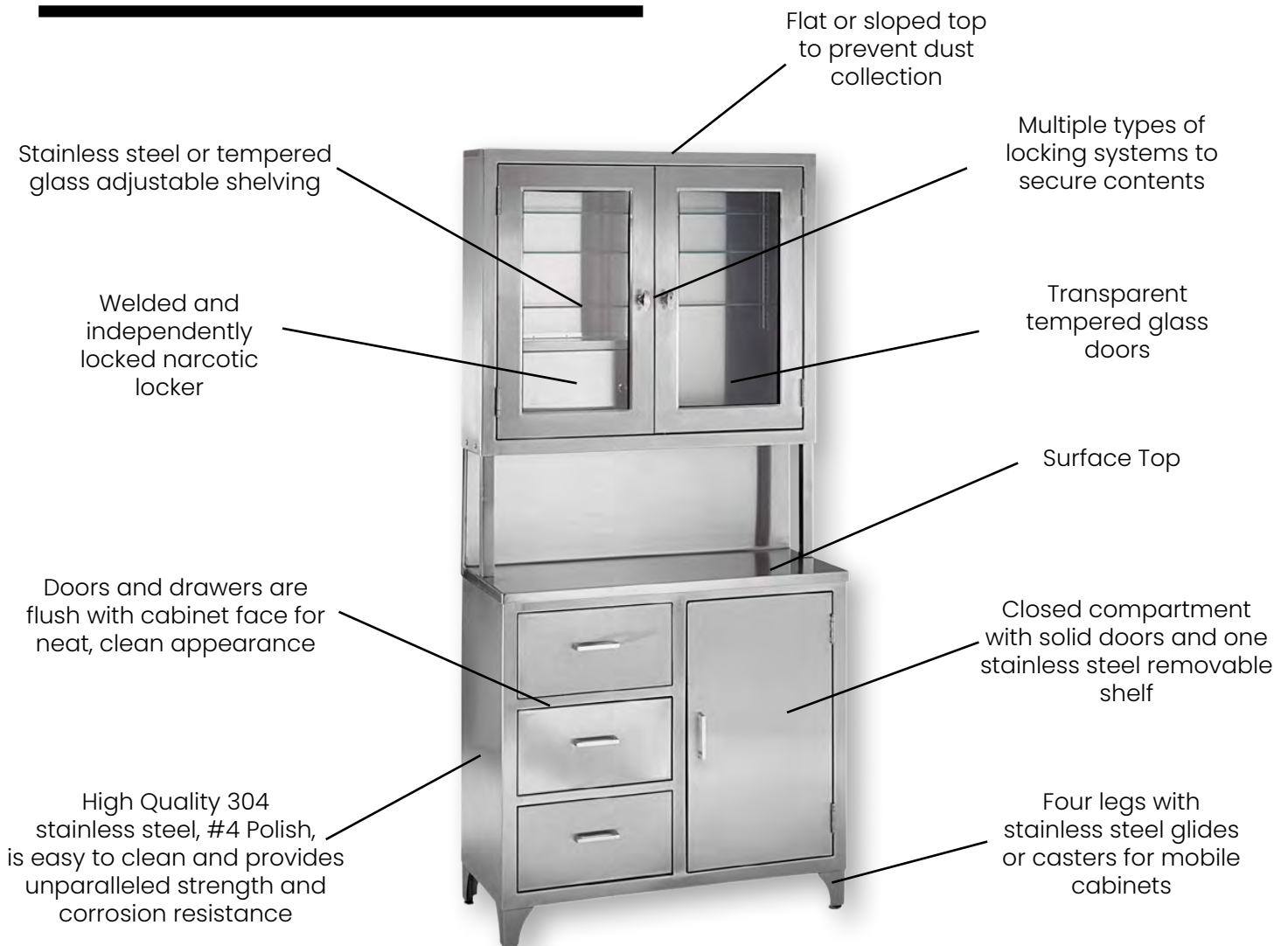
Customizable, secure, and organized

THE BLICKMAN DIFFERENCE

Freestanding Cabinets

- Our stainless steel cabinets are constructed with a seamless welded face preventing dirt collection while providing long lasting durability through unparalleled strength and corrosion resistance.
- Our freestanding cabinets rest on four legs with glides or can be mobilized on casters.
- Add a sloped top to prevent dirt collection to create a sterile environment.
- Kay and Kennedy cabinets feature two separate sections with unlocked or locked compartments.
- Paul and Walter cabinets provide maximum storage room for large equipment.

Key Product Features



Cabinets

Freestanding

FREESTANDING

Description: Our Kay and Kennedy freestanding cabinets feature separate upper and lower sections. The upper sections of these cabinets are locked, transparent compartments for easily viewing and securing contents. The Kennedy cabinet includes an independently locked and welded locker.



Kay Cabinet

Upper section: Consists of a locked 29 3/4" x 31 3/8" x 15" compartment with a glass door and three removable glass shelves

Lower section: Consists of a 29 3/4" x 20 1/2" x 15" compartment with a stainless steel door and one stainless steel shelf



Kennedy Cabinet

Upper Section: 8" deep and contains a welded and independently locked narcotic locker

Lower Section: 16" deep and contains three 7" deep drawers and one 15" deep compartment

Name	Kay	Kennedy
Dimensions (WxHxD)	30" x 58" x 16"	36" x 76 1/2" x 16"
Model #	7953SS	7956SS
Item #	1517953000	1527956000
Shipping Weight	219 lbs.	291 lbs.

Options: 2 "Casters, stainless steel shelves for upper cabinets, sloping top, all stainless steel doors

Custom Designs Available Upon Request
Please email us at info@blickman.com

Cabinets

Freestanding

FREESTANDING

Description: Our Paul and Walter cabinets are double door freestanding cabinets. They each come standard with two glass locked doors for securing contents. Our Walter cabinet is ideal for storing large equipment on its back pegboard, while our Paul cabinet includes shelving for supplies. They are both 16" deep and 76" tall on gliders. They are 79 1/4" tall on casters. Choose from two standard width sizes: 35 5/8" and 47 5/8".



Walter Cabinet

This cabinet is great for storing endoscopy equipment or other large instruments on its pegboard



Paul Cabinet

This cabinet provides maximum shelving storage for instruments and supplies. Glass shelves are adjustable every 1/2"

Name	Walter		Paul	
	35 5/8"W	47 5/8"W	35 5/8"W	47 5/8"W
Model #	7959SS	7960SS	7970SS	7971SS
Item #	1537959000	1537960000	1537970000	1537971000
Shipping Weight	269 lbs.	310 lbs.	330 lbs.	400 lbs.

Options: Glides or casters, recessing, flat top, stainless steel shelves (Paul Cabinet), all stainless steel doors

Custom Designs Available Upon Request
Please email us at info@blickman.com

Cabinets

FREESTANDING
Options &
Accessories

FOOT OPTIONS



Locking Casters



Casters



Gliders

ACCESSORIES



Electronic Locking Systems,
available for most of our cabinets



Additional Shelves, your choice of
stainless steel or glass



Sloped top (see order details
below)

Model #	Item #	Description	Shipping Weight
ST-3016	4503516300	Sloped Top for Kay (30" x 6" x 16")	35 lbs.
ST-3608	4503536080	Sloped Top for Kennedy (36" x 6" x 8")	37 lbs.
ST-3516	4503516350	Sloped Top for Walter or Paul (slim) (35 5/8" x 6" x 16")	43 lbs.
ST-4716	4503516470	Sloped Top for Walter or Paul (wide) (47 5/8" x 6" x 16")	54 lbs.

Cabinets

FREESTANDING
Construction
Specifications

Construction Specifications

Standard Dimensions	All Freestanding Cabinets: 16" deep
Materials	304 stainless steel 1/4" clear tempered sheet glass
Gauge	Body, Sloped Top, Drawers, and Shelf Inserts: 18GA; Legs: 12GA Glass Doors (Front and Back): 18GA Solid Doors (Front): 18GA; Solid Doors (Back): 20GA
Welding	All welding by heliarc method and exposed welds are ground smooth
Finish	Exposed surfaces are free from pit marks, weld seams, scale and are polished with #4 polish to a satin finish
Casters	2" or 3" ball bearing, swivel casters with brakes
Notes	<ul style="list-style-type: none">• Kay: A counter weight is fastened underneath at bottom rear of cabinet for doors in open position. Upper door fitted with lock handle and three way latching device engaging at top.• Kennedy: Right hand door equipped with a locking knob and three way latching. Left hand door with dummy knob and roller latch. An independently locked narcotic cabinet, 13 1/4" x 5" x 7 3/4" with double walled door is welded to the bottom, back, and side of the compartment.• Paul & Walter: A counter weight is fastened underneath at bottom rear of cabinet for doors in open position. Right hand door is fitted with a locking handle and three point latching, and the left door has a dummy knob and spring loaded nylon roller catches.

Shipping Information

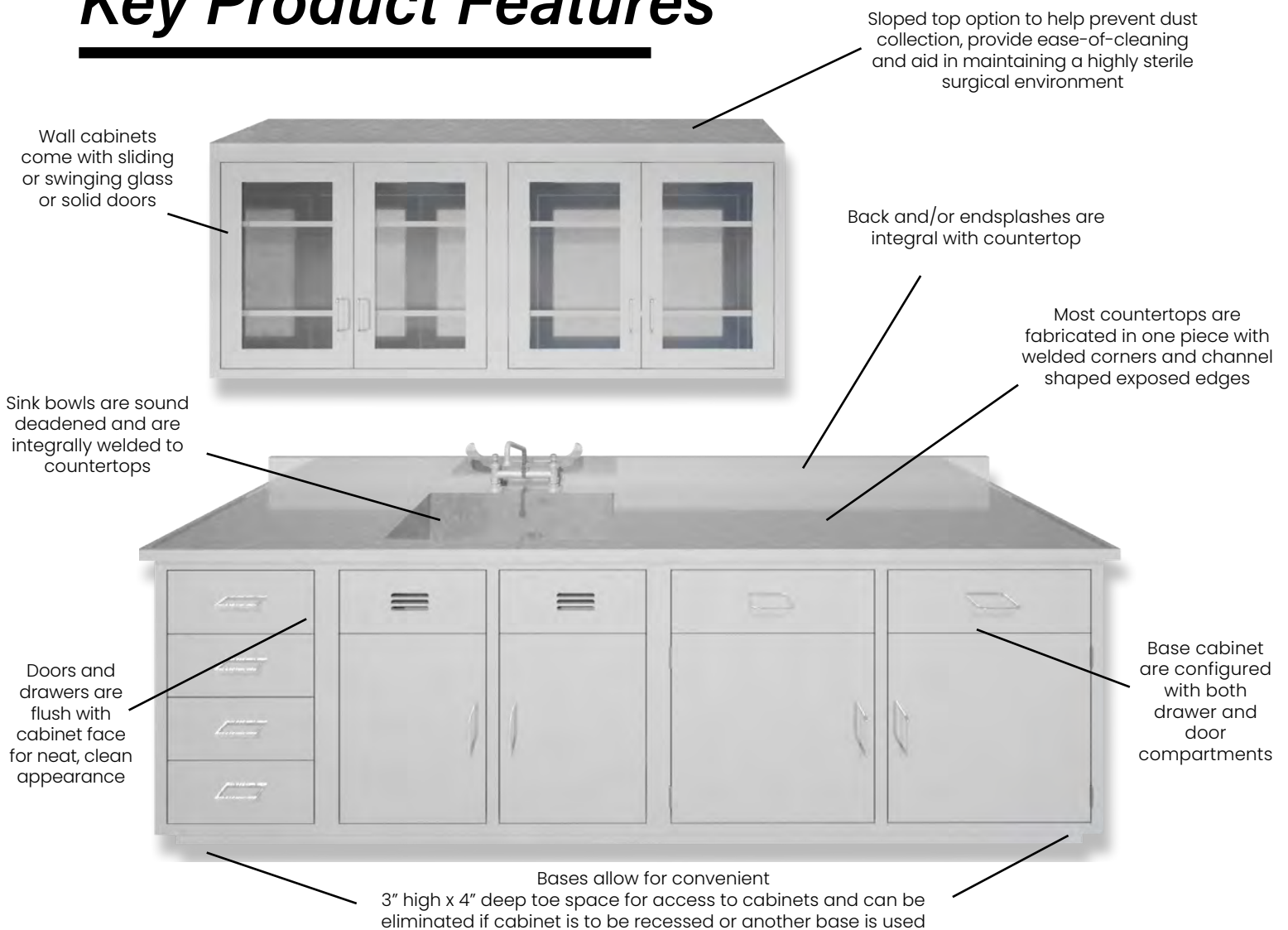
All shipping weights are estimates and may be changed without prior notice. Specifications may be improved and dimensions changed without prior notice. Please contact customer service for estimated shipping costs at info@blickman.com.

THE BLICKMAN DIFFERENCE

Casework

- Need more flexibility in today's space squeezed environment? We provide you with casework that can be assembled together and modified to fit your custom dimensions.
- Whether it is renovation or new construction, we will be happy to work with your facility's personnel, architects, contractors, and/or equipment planners to meet your custom requirements.
- Utilizing 3D Design Software REVIT®, we have developed a library of our standard products which is available at no charge to your company. Our 3D library will save you considerable time and money when working on projects that require stainless steel cabinets and equipment.
- Each product line of cabinets (console cabinets, high cabinets, base cabinets, and wall cabinets) have their individual properties identified for easy customization: (cubic feet, weight, "X", "Y" and "Z" dimensions, voltage, etc.).

Key Product Features



www.blickman.com

Cabinets

Customizable
Casework

HIGH CABINETS

Description: Our stainless steel high cabinets are designed to stand alone or fit within a framework of cabinets. They are constructed as floor and wall supported individual cases with finished sides. They each contain five adjustable stainless steel shelves, with the option of glass shelves and additional shelves. They are all 84" tall and 18" deep cabinets. Width varies and other alternative dimensions are available.

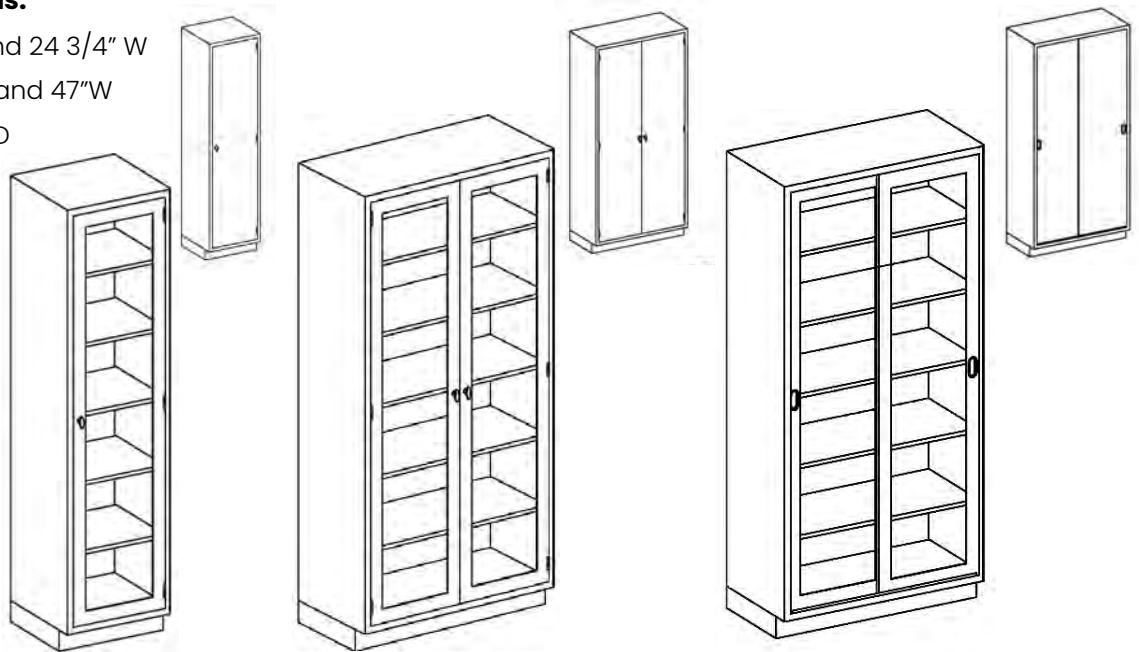
Customize the widths and depths of these models to your room.

Common Dimensions:

Single Door: 21 3/4" and 24 3/4" W

Double Door: 29", 41", and 47"W

Alternative Depth: 23"D



Name	Single Door	Double Door	Double Sliding Doors
		Glass Doors	
Dimensions (WxHxD)	18 3/4" x 84" x 18"	35" x 84" x 18"	35" x 84" x 18"
Model #	K18HAS	L35HAS	M35HAS
Item #	2030518000	203053500	2030635000
Shipping Weight	215 lbs.	310 lbs.	325 lbs.
		Solid Stainless Steel Doors	
Dimensions (WxHxD)	18 3/4" x 84" x 18"	35" x 84" x 18"	35" x 84" x 18"
Model #	H18HAS	I35HAS	J35HAS
Item #	2030418000	2030435000	2030535180
Shipping Weight	230 lbs.	300 lbs.	347 lbs.

Options: Sloped top, glass shelves, additional shelves

Custom Designs Available Upon Request
Please email us at info@blickman.com

Cabinets

Customizable
Casework

WALL CABINETS

Description: Our stainless steel wall cabinets are designed to stand alone with finished sides or to fit within a framework of cabinets. They are constructed for flush face wall surfaces with a recessed back panel for uneven wall surfaces. Each cabinet comes with two 1/2" adjustable stainless steel shelves. Choose from swinging or sliding doors made of either solid stainless steel or glass. Our wall cabinets are all 30" tall and 13" deep. Width varies and other alternative dimensions are available.

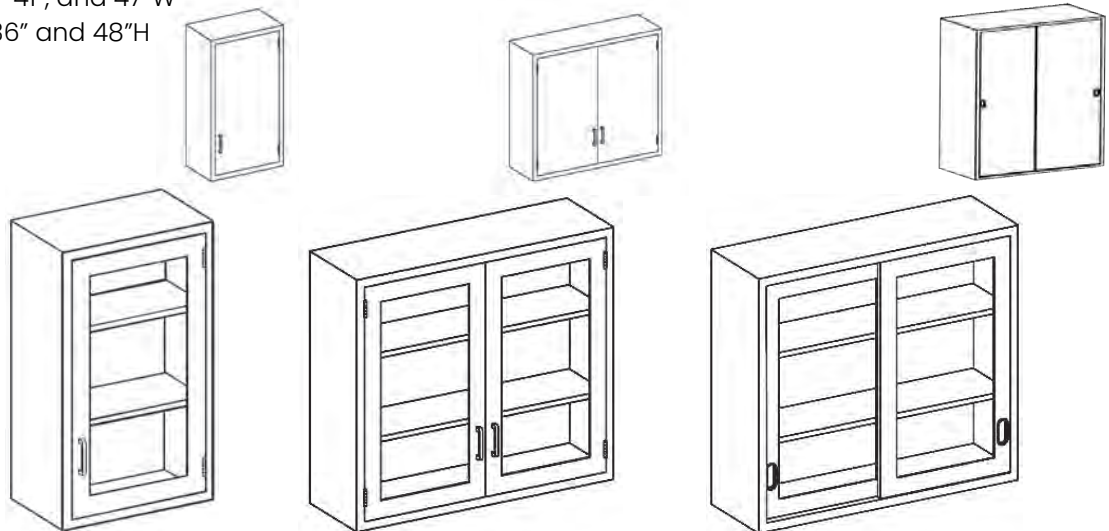
Customize the widths and heights of these models to your room.

Common Dimensions:

Single Door: 18 3/4", 21 3/4", and 24 3/4" W

Double Door: 29", 35" 41", and 47"W

Alternative Heights: 36" and 48"H



Name	Single Door	Double Door	Sliding Doors
		Glass Doors	
Dimensions (WxHxD)	18 3/4" x 30" x 13"	35" x 30" x 13"	35" x 30" x 13"
Model #	D18LS	E35LS	F35LS
Item #	2020318000	2020335000	2023035000
Shipping Weight	95 lbs.	145 lbs.	135 lbs.
		Solid Stainless Steel Doors	
Dimensions (WxHxD)	18 3/4" x 30" x 13"	35" x 30" x 13"	35" x 30" x 13"
Model #	A18LS	B35LS	C35LS
Item #	2020218000	2020235000	2023135000
Shipping Weight	90 lbs.	141 lbs.	130 lbs.

Options: Sloped top, glass shelves, additional shelves

Custom Designs Available Upon Request

Please email us at info@blickman.com

Cabinets

Customizable
Casework

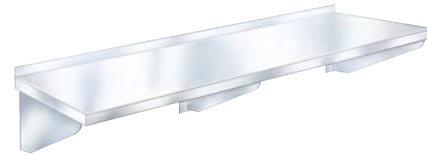
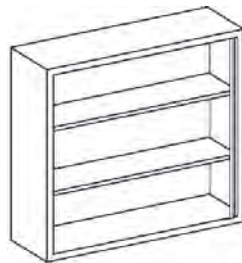
OPEN WALL SHELVES

Description: Our stainless steel open wall cabinet is designed to stand alone with finished sides or fit within a framework of cabinets and comes with two adjustable stainless steel shelves. Alternatively, we offer a wall shelf that can be placed anywhere along a wall.

Common Dimensions:

Wall Cabinet Widths: All Single and Double Width Sizes
Heights: 36" and 48"

Wall Shelf Widths: 48", 60", and 72", Depths: 16"



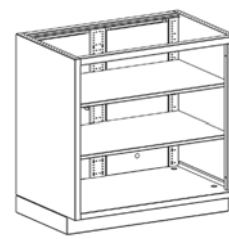
Name	Open Wall Cabinet		Wall Shelf	
Width	35" W	47" W	36" W	84" W
Dimensions (WxHxD)	35" x 30" x 13"	47" x 30" x 13"	36" x 12"	84" x 12"
Model #	G35LS	G47LS	WS3612	WS8412
Item #	2020435000	202044700	1813612000	1818412000
Shipping Weight	75 lbs.	142 lbs.	26 lbs.	40 lbs.

OPEN BASE CABINETS

Description: Our stainless steel open base cabinets offer open shelving to fit within a framework of cabinets or stand alone with finished sides. They are constructed for flush face wall surfaces and come with two adjustable stainless steel shelves. Our open base cabinets are all 22" deep and 35 3/4" high and come in a variety of width sizes.

Other Commonly Ordered Single Width Sizes: 21 1/8" W

Other Commonly Ordered Double Width Sizes: 29"W and 41"W



Name	Single Width		Double Width	
Width	18 1/8" W	24 1/8" W	35" W	47" W
Model #	AJ18HS	AJ24HS	AJ35HS	AJ47HS
Item #	2012518000	2012524000	2012535000	2012547000
Shipping Weight	102 lbs.	122 lbs.	152 lbs.	170 lbs.

Custom Designs Available Upon Request

Please email us at info@blickman.com

Cabinets

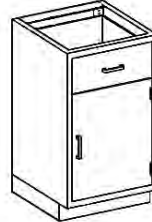
Customizable
Casework

SINGLE BASE CABINETS

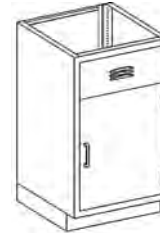
Description: Our stainless steel single width base cabinets come in five different configurations and are designed to stand alone with finished sides or to fit within a framework of cabinets. They are all 35 3/4" tall and 22" deep, and come in two width sizes, 18 1/8" and 24 1/8". **Other Commonly Ordered Single Width Sizes:** 21-1/8"W



**-AA-
Door**



**-AB-
Door, Drawer**



**-AC-
Door, Vent (Sink)**

Name	18 1/8" Wide		
Model #	AA18HS	AB18HS	AC18HS
Item #	2012118000	2012218000	2012218001
Shipping Weight	80 lbs.	125 lbs.	107 lbs.
Name	24 1/8" Wide		
Model #	AA24HS	AB24HS	AC24HS
Item #	2012224000	2012124000	2012224001
Shipping Weight	132 lbs.	147 lbs.	118 lbs.

Note: Cabinets without vents include one stainless steel shelf inside



**-AS-
3 Drawer**



**-AE-
4 Drawer**

Name	18 1/8" Wide	
Model #	AS18HS	AE18HS
Item #	2012718000	2012318000
Shipping Weight	167 lbs.	174 lbs.
Name	24 1/8" Wide	
Model #	AS24HS	AE24HS
Item #	2012724000	2012324000
Shipping Weight	183 lbs.	192 lbs.

Note: Cabinets without vents include one stainless steel shelf inside

Custom Designs Available Upon Request

Please email us at info@blickman.com

Cabinets

Customizable
Casework

DOUBLE BASE COMPARTMENT CABINETS

Description: Our stainless steel double base compartment cabinets come in seven different configurations and are designed to stand alone with finished sides or to fit within a framework of cabinets. They are all 35 3/4" tall and 22" deep, and come in two width sizes, 35" and 47". **Other Commonly Ordered Sizes:** 29"W and 41"W



Name

**-DA-
Double Door**

**-DB-
Double Vent (Sink)**

**-DC-
Large Drawer**

**-DD-
Double Drawer**

35" Wide

Model #	DA35HS	DB35HS	DC35HS	DD35HS
Item #	2013235200	2013235000	2013235001	2013335000
Shipping Weight	161 lbs.	145 lbs.	200 lbs.	194 lbs.

47" Wide

Model #	DA47HS	DB47HS	DC47HS	DD47HS
Item #	2013247200	2013247000	2013247001	2013347000
Shipping Weight	205 lbs.	178 lbs.	235 lbs.	243 lbs.

Note: Cabinets without vents include one stainless steel shelf inside



Name

**-DG-
1 Door, 4 Drawer**

**-DJ-
1 Door, 8 Drawer**

**-DK-
1 Door, 5 Drawer**

35" Wide

Model #	DG35HS	DJ35HS	DK35HS
Item #	2013435000	2013535001	2013535000
Shipping Weight	180 lbs.	225 lbs.	257 lbs.

47" Wide

Model #	DG47HS	DJ47HS	DK47HS
Item #	2013447000	2013547001	2013547000
Shipping Weight	282 lbs.	280 lbs.	283 lbs.

Note: Cabinets without vents include one stainless steel shelf inside

Custom Designs Available Upon Request

Please email us at info@blickman.com

Cabinets

Customizable
Casework

DOUBLE BASE DRAWER CABINETS

Description: Our stainless steel double base drawer cabinets come in five different configurations and are designed to stand alone with finished sides or to fit within a framework of cabinets. They are all 35 3/4" tall and 22" deep, and come in two width sizes, 35" and 47".

Other Commonly Ordered Sizes: 29"W and 41"W



**-DP-
4 Drawer**



**-DS-
5 Drawer**

35" Wide

Model #	DP35HS	DS35HS
Item #	2013735000	2013735001
Shipping Weight	238 lbs.	275 lbs.

47" Wide

Model #	DP47HS	DS47HS
Item #	2013647000	2013747001
Shipping Weight	276 lbs.	315 lbs.



**-DT-
8 Drawer**



**-DR-
4 Small, 2 Large**



**-FC-
6 Small, 2 Large**

35" Wide

Model #	DT35HS	DR35HS	FC35HS
Item #	2013835000	2013635000	2013235002
Shipping Weight	287 lbs.	265 lbs.	275 lbs.

47" Wide

Model #	DT47HS	DR47HS	FC47HS
Item #	2013847000	2013747000	2013247002
Shipping Weight	324 lbs.	310 lbs.	323 lbs.

Custom Designs Available Upon Request

Please email us at info@blickman.com

Cabinets

Customizable
Casework

SINKS AND COUNTERTOPS

Please email us at info@blickman.com

Sink bowls come with moisture proof, sound-deadening mastic and are compatible with select base cabinets

Optional back/endsplashes (4" high) to protect wall surfaces



Counter top extends 1" past the front and past both sides of the base cabinet dimensions

Counter top is 304 stainless steel and comes standard with a Marine Edge to help protect against liquid slippage

Description: Our sinks and countertops must be ordered separately and are installed in the field. Most of our countertops are fabricated from one piece of fully welded, 16 gauge, 304 stainless steel. They extend 1" beyond the front, right, and left sides of base cabinet dimensions. Unless otherwise specified, they come with a Marine Edge to help protect against liquid slippage. Optionally, 4" high backsplashes and endsplashes are available to protect wall surfaces.

Base Cabinets Compatible with Additional Sink Bowl



AC

DB

AA

DA

DG

DJ

We suggest using Models AC and DB for moisture ventilation.

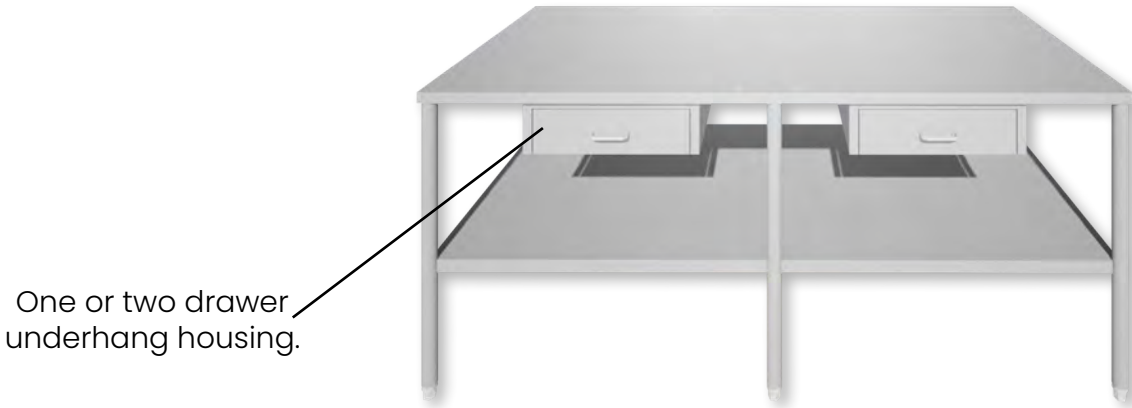
All piping and sink bowls can fit under any of these models with the door compartments and no drawers on top.

Cabinets

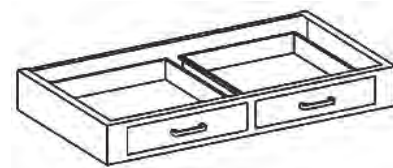
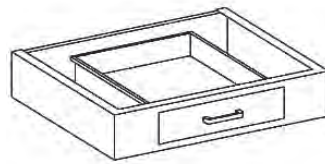
Customizable
Casework

DRAWER HOUSING

Please email us at info@blickman.com



Description: You can use drawer housing to add a drawer or two under your countertop or tabletop surface. This helps increase storage space to prevent lack of access to equipment and supplies when stored separately. All drawer housing is 22" deep and reaches 5" below the underside of the countertop or tabletop. Width of drawer housing varies depending on size and number of drawers inside. The drawers are all 18 1/8" deep and 2 1/2" tall and come in two width sizes: 14 1/8" and 20 1/8".



Name Drawer & Housing Widths	Single Drawer		Double Drawer	
	14 1/8" W Drawer 24" W Housing	20 1/8" W Drawer 29" W Housing	14 1/8" W Drawer 35" W Housing	20 1/8" W Drawer 47" W Housing
Model #	DH124S	DH129S	DH235S	DH247S
Item #	2043424000	2043429000	2043435000	2043447000
Shipping Weight	35 lbs.	40 lbs.	50 lbs.	60 lbs.

Custom Designs Available Upon Request
Please email us at info@blickman.com

Cabinets

CASEWORK
Options &
Accessories

OPTIONS



Sloped Top is available for all High Cabinets and Wall Cabinets. Listed below are the sloped tops that correspond to the cabinets with the standard dimensions shown in this previously in this section.

Model #	Item #	Description	Shipping Weight
ST-1818	5003518180	Sloped Top for 18 ³ / ₄ "W High Cabinets (18 ³ / ₄ " x 11 ¹ / ₄ " x 18")	24 lbs.
ST-3518	5003535180	Sloped Top for 35"W High Cabinets (35" x 11 ¹ / ₄ " x 18")	41 lbs.
ST-1813	5003518130	Sloped Top for 18 ³ / ₄ " W Wall Cabinets (18 ³ / ₄ " x 8 ¹ / ₄ " x 13")	21 lbs.
ST-3513	5003535130	Sloped Top for 35" W Wall Cabinets (35" x 8 ¹ / ₄ " x 13")	36 lbs.

ACCESSORIES



Electronic Locking Systems available for most of our cabinets



Additional Shelves, your choice of stainless steel or glass

Custom Designs Available Upon Request

Please email us at info@blickman.com

Cabinets

Construction Specifications

Standard Dimensions	High Cabinets: 84" tall x 18" deep, widths vary Wall Cabinets: 30" tall x 13" deep, widths vary Base Cabinets: 35 3/4" tall x 22" deep, widths vary Countertops: 1" overhang in front and both sides of base cabinets
Materials	304 Stainless Steel 1/4" clear tempered sheet glass
Gauge	Body, Sloped Top, Drawers, and Shelf Inserts: 18GA; Base: 16GA Glass Doors (Front and Back): 18GA Solid Doors (Front): 18GA; Solid Doors (Back): 20GA
Welding	All welding by heliarc method and exposed welds are ground smooth
Finish	Exposed surfaces are free from pit marks, weld seams, scale and are polished with #4 polish to a satin finish
Casters	N/A
Notes	<ul style="list-style-type: none">• Cabinet Parts:<ul style="list-style-type: none">• Hinge Doors: Hung on semi concealed stainless steel hinges and fitted with die cast aluminum bar pulls and spring loaded nylon roller catches.• Sliding Doors: Suspended from overhead ball bearing rollers, which are noiseless and self-lubricating, and ride in stainless steel guide strips fitted with die formed, recessed pulls securely welded in place.• Shelves: Constructed with a channel shaped, flanged edge and centers the full height of the cabinet.• Drawers: Drawer bodies are a one piece construction with covered corners. Drawer face equipped with die cast aluminum bar pole handles. Drawers operated on ball bearing roller slides with full extension.• High Cabinets & Wall Cabinets: Recessed pan back, 3/4" deep.• Base Cabinets: Each applied with a channel shaped base, incorporating toe space approximating 3" deep and 4" high, for easy cabinet access. Can be omitted when recessed or another base is used.• Sinks and Countertops: Fabricated in one piece, where possible, with welded corners, channel shaped exposed edges, and reinforced with three full length hat shaped galvaneal channels.

Shipping Information

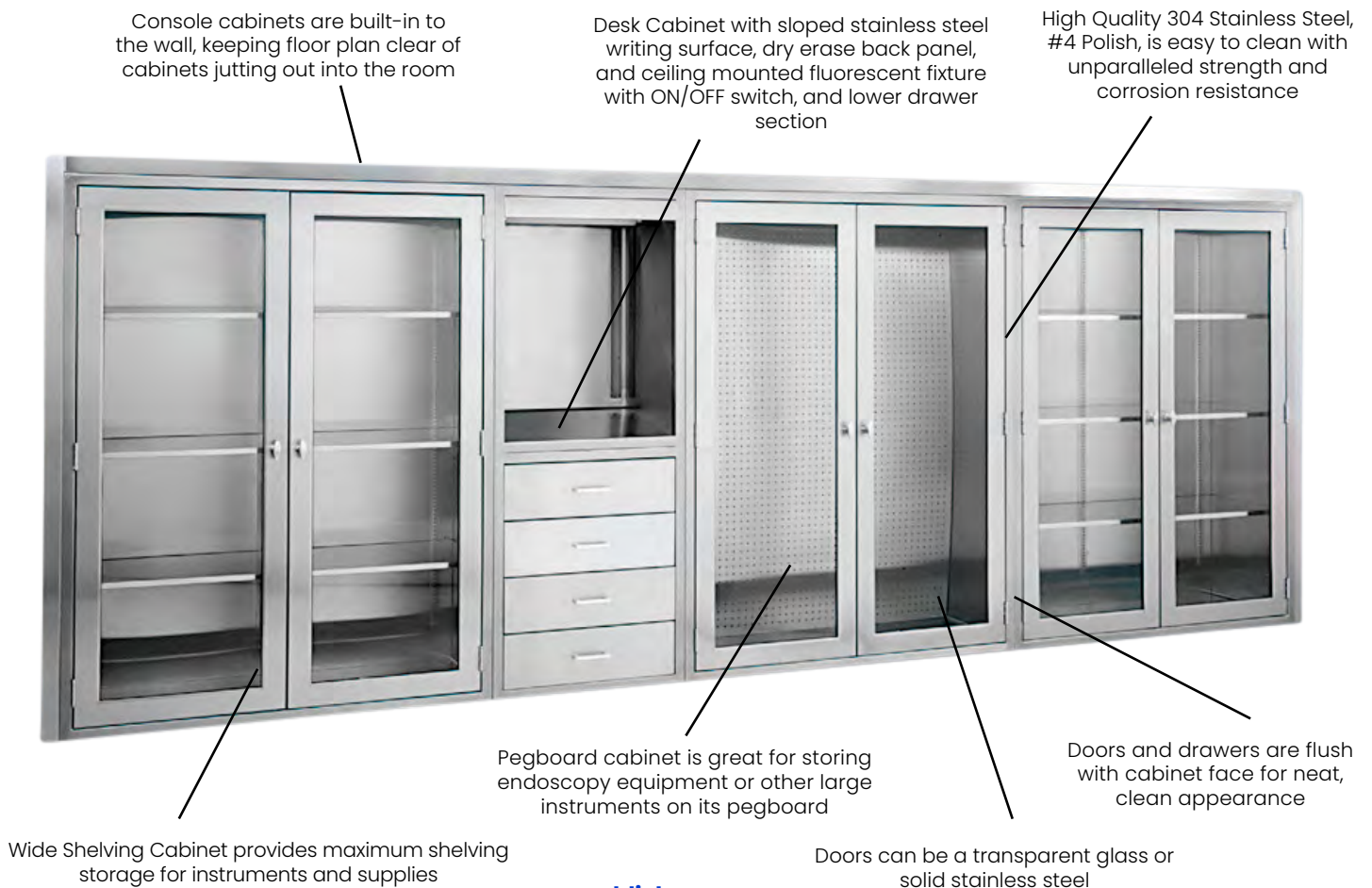
All shipping weights are estimates and may be changed without prior notice. Specifications may be improved and dimensions changed without prior notice. Please contact customer service for estimated shipping costs at info@blickman.com.

THE BLICKMAN DIFFERENCE

Console Cabinets

- Our console cabinets are designed with you in mind. Without taking up valuable floor space, choose these cabinets for storing a full scheduled day, protecting your supplies behind closed doors, and allowing instant access to supplies.
- We offer individual units that can be combined and assembled into your own custom console arrangements. You can easily design your own by selecting cabinets with solid or glass doors available with or without locks. Locks can be keyed alike or independently.
- We offer units with shelving that is good for storing equipment and supplies and other units with pegboard backs, great for storing large pieces of equipment.
- We also offer a desk cabinet with drawers, a sloped writing surface, and a dry erase board.

Key Product Features

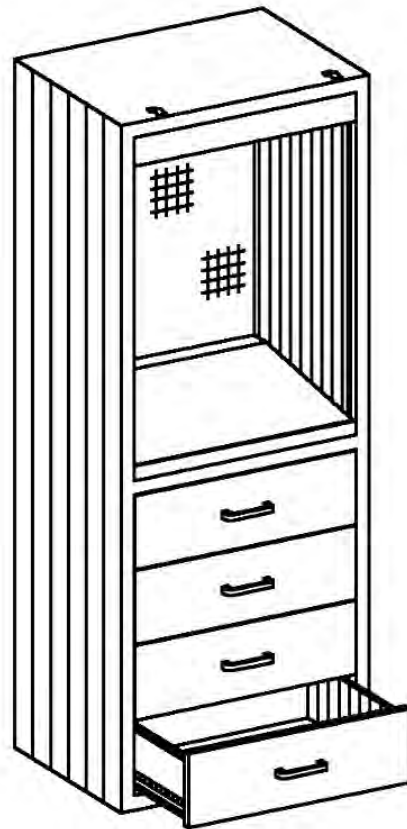
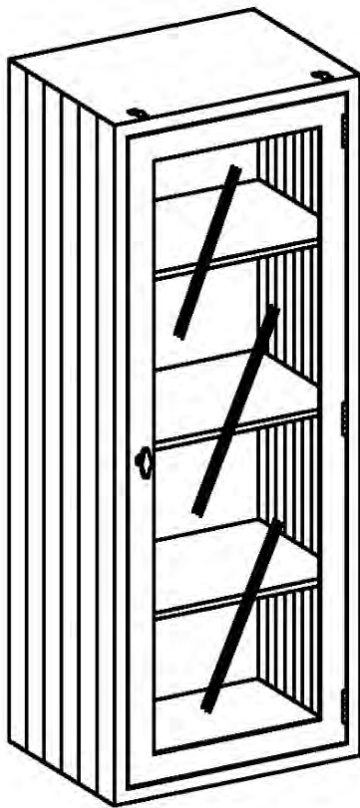


Cabinets

Console Cabinets

SINGLE WIDTH

Description: Our single width console cabinets are 24 1/8" x 60" x 18" and are designed as individual units that can be combined and assembled into your own custom console arrangements. All doors and shelves come in glass or solid stainless steel. Drawers are all stainless steel.



Name	Miscellaneous Supply Cabinet		Desk Console Cabinet
	Glass Door	Solid Door	Drawers
Model #	MS24	MS24S	DC24
Item #	1716724000	1716724258	1713224000
Shipping Weight	240 lbs.	240 lbs.	245 lbs.

Custom Designs Available Upon Request
Please email us at info@blickman.com

Cabinets

Console Cabinets

DOUBLE WIDTH

Description: Our double width console cabinets are all designed as individual units that can be combined and assembled into your own custom console arrangements. All doors and shelves come in glass or solid stainless steel. They are both 60" high and 18" deep and come in two width sizes: 35" and 47".



Name	Equipment & Supplies Console Cabinet		Table Accessories Console Cabinet	
	Glass Door	Solid Door	Glass Door	Solid Door
35" W				
Model #	ES35	ES35S	TA35G	TA35
Item #	1713735000	1713735258	1718235010	1718235000
Shipping Weight	250 lbs.	250 lbs.	250 lbs.	250 lbs.
47" W				
Model #	ES47	ES47S	TA47G	TA47
Item #	1713747000	1713747258	1718247003	1718247000
Shipping Weight	275 lbs.	275 lbs.	355 lbs.	355 lbs.

Custom Designs Available Upon Request
Please email us at info@blickman.com

Cabinets

Console Cabinets

RECESSED WARMING CABINETS

Description: Our recessed warming cabinets are designed for built-in installation. Single chamber glass door, solid door, and passthrough models available. Three perforated stainless steel shelves come standard in these models.

Glass Door



Solid Door



Passthrough



Note: For the passthrough unit, the front door is glass, the back door is solid.

Dimensions

Width: 30" x Height: 60" x Depth: 20 5/8"

Electrical:

Amps: 7.5 | Total Wattage: 750

Name	Glass Door	Solid Door	Passthrough
Model #	SW40TG	SW40TS	SW40PTGS
Item #	14BSW40243	14BSW40200	14BSW40278
Shipping Weight	320 lbs.	320 lbs.	245 lbs.

Options: Dual chambers, alternative passthrough configurations.

Cabinets

CONSOLE CABINET
Accessories &
Options

ACCESSORIES

Cemented
Corner Guard,
16 gauge 304
stainless steel



Recess trim
available for
built-in console
cabinets

Model #	Description	Shipping Weight
CG4448	48" High corner guards, for protection and corrosion resistance (4"x4"x48")	20 lbs.
CG4496	96" High Corner guards, for protection and corrosion resistance (4"x4"x96")	20 lbs.
Rt120	Recessing trim, 22GA 304 stainless steel (10' strips, 1 1/2" x 1 1/2" wide)	20 lbs.



Electronic Locking Systems available
for most of our cabinets



Passthrough Cabinets available
for built-in applications

Custom Designs Available Upon Request
Please email us at info@blickman.com

Cabinets

CONSOLE CABINET
Construction
Specifications

Construction Specifications

Standard Dimensions	All console cabinets are 16" high x 18" deep, widths vary Exception: warming cabinets are 20" deep
Materials	304 Stainless Steel 1/4" clear tempered sheet glass
Gauge	Body, Sloped Top, Drawers, and Shelf Inserts: 18GA Glass Doors: Front and Back: 18GA Solid Doors (Front): 18GA; Solid Doors (Back): 20GA
Welding	All welding by heliarc method and exposed welds are ground smooth
Finish	Exposed surfaces are free from pit marks, weld seams, scale and are polished with #4 polish to a satin finish
Casters	N/A
Notes	<ul style="list-style-type: none">• All Console Cabinets: Solid doors are double panned, channel reinforced. Glass doors come in double shell design, with one piece outer frames dieformed to receive rubber gasketed glass panels held in place by inner retaining strips.• Double Door Console Cabinets: Right door fitted with two point up and down knob latching, left hand door with integral stops, dummy knob, and spring loaded nylon roller catch. Doors operate on three semi-concealed stainless steel hinges. Pegboard Cabinet interiors (back and sides) are lined with removable 18GA stainless steel pegboard.• Desk Console Cabinet: Four drawers with double wall fronts operate on side mounted, two section ball bearing roller slides with built-in extension stops. Heads provided with diecast aluminum bar pulls.• Single Door Shelving Console Cabinet: Can be either right or left hinged.• Recessed Warming Cabinets: Temperature control from 90°F - 160°F. 160x180 pixel graphical display with dual colors (red/green). Built-in temperature data recorder with real time clock (RTC).

Shipping Information

All shipping weights are estimates and may be changed without prior notice. Specifications may be improved and dimensions changed without prior notice. Please contact customer service for estimated shipping costs at info@blickman.com.

BLICKMAN



Stools

Providing ultimate comfort and function

THE BLICKMAN DIFFERENCE

STOOLS

- Our durable, high quality chrome and stainless steel stools come with 3" thick, dense foam 15" diameter cushion for ultimate comfort.
- Our upholstery is washable vinyl and is available in an array of 75 fashion colors that meet specific your design requirements - see upholstery catalog for details.
- For actions that require mobility and longevity, pick from our revolving stools, or for a more modern look, choose from four or five leg models with spindle adjusted or pneumatic lift mechanisms.
- For back support, choose one of our models with a back rest.
- Our three styles of locking casters allow for easy mobility and safety.

Key Product Features





Stools

Spindle

4 LEG SPINDLE EXAM STOOLS

Description: We offer two four leg spindle adjusted exam stools with the option of 2" casters or rubber crutch tips. Choose our Passaic stool and sit comfortably on a 15" diameter, 3" thick polyfoam padded seat upholstered in vinyl or choose our Clifton stool for an easy-to-clean stainless steel seat with a non-slip vinyl insert. Add a removable pad slipcover to your Clifton stool for a more comfortable option.



Spindle

Adjusts 12"
Rubber Tips: 19" - 31"
Casters: 21" - 33"



Name

CLIFTON

PASSAIC

Standard

With Pad

Standard

Casters

Model #	7745SS-C	7745SS-PC	7714-PSSC
Item #	1027745001	1027745003	1027714125
Shipping Weight	17 lbs.	17 lbs.	17 lbs.

Crutch Tips

Model #	7745SS	7745SS-P	7714-PSS
Item #	1027745000	1027745002	1027714025
Shipping Weight	16 lbs.	16 lbs.	16 lbs.



Options: Available in standard black. Consult factory for requests in other colors for large order quantities



Stools

Spindle

5 LEG SPINDLE EXAM STOOL

Description: Our five leg spindle exam stool rests on a 24" diameter base. Choose between a black composite base or an aluminum base with Wall Saver™ tips on the ends to protect against scuff marks and offer a textured surface for foot grip. Sit comfortably on its 15" diameter, vinyl upholstered seat with 3" thick polyfoam padding. This model is available with or without a back.



Spindle

Adjusts 5 7/8"
Height: 20 7/8" - 26 3/4"



Name	5 Leg Spindle Stool	
	Aluminum Base	
Model #	1113	1113WB
Item #	1021113000	1021113200
Shipping Weight	22 lbs.	26 lbs.
Name	5 Leg Spindle Stool with backrest	
	Black Composite Base	
Model #	1113BLK	1113WB-BLK
Item #	1021113100	1021113300
Shipping Weight	22 lbs.	26 lbs.

Options: Foot ring, 75 different vinyl colors - see upholstery catalog



Stools

Pneumatic

FOOT OPERATED EXAM STOOL

Description: Our five-leg foot operated exam stool have a push ring under a 24" diameter aluminum base with Wall Saver™ tips on the ends to protect against scuff marks and offer a textured surface for foot grip. Sit comfortably on its 15" diameter, vinyl upholstered seat with 3" thick polyfoam padding. This model is available with or without a back.



Foot Pedal

Adjusts 7"
Height: 18 3/8" - 25 3/8"



Name	Foot Operated Stool	Foot Operated Stool with Backrest
	Aluminum Base	
Model #	1205	1206
Item #	1041205000	1041206000
Shipping Weight	22 lbs.	28 lbs.

Options: Foot ring, 75 different vinyl colors - see upholstery catalog



Stools

Pneumatic

HAND OPERATED EXAM STOOLS

Description: Our five-leg hand operated exam stool rests on a 24" diameter base. Choose between a black composite base or an aluminum base with Wall Saver™ tips on the ends to protect against scuff marks and offer a textured surface for foot grip. Sit comfortably on its 15" diameter, vinyl upholstered seat with 3" thick polyfoam padding. This model is available with or without a back.



Hand Lift

Adjusts 7"
Height: 18 3/8" - 25 3/8"



Name	Hand Operated Stool	Hand Operated Stool with Backrest
	Aluminum Base	
Model #	1210	1210WB
Item #	1041210000	1041210200
Shipping Weight	22 lbs.	26 lbs.
	Black Composite Base	
Model #	1210BLK	1210WB-BLK
Item #	1041210100	1041210300
Shipping Weight	22 lbs.	26 lbs.

Options: Foot ring, 75 different vinyl colors - see upholstery catalog



Stools

Pneumatic

HAND OPERATED EXAM STOOLS Economy Stools

Description: Our economy hand operated exam stool rests on a 24" diameter black composite base with black plastic twin wheel casters. Sit in comfort on a 15" diameter, vinyl upholstered seat with 3" thick polyfoam padding. This model is available with and without a back.

Adjusts 7" from 18 3/8" to 25 3/8" off the ground



Name	Economy Stool	
	Without Back	With Back
Model #	1200	1201
Item #	1041200100	1041201300
Shipping Weight	22 lbs.	26 lbs.

Options: Foot ring, 73 different vinyl colors - see upholstery catalog

Deluxe Stools

Description: Our deluxe hand operated exam stool comes standard with a foot ring for leg-joint comfort. These stools rest on a 24" diameter black composite or aluminum base, which comes with Wall Saver™ tips to protect against scuff marks and offer a textured surface for foot grip. Both bases travel easily on 2" hard rubber casters. Sit in comfort on a 15" diameter, vinyl upholstered seat with 3" thick polyfoam padding with a backrest.

Adjusts 7" from 21 3/8" to 28 3/8" off the ground

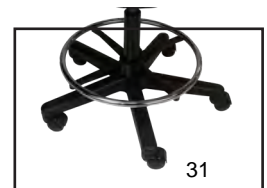


Name	Deluxe Stool	
	Aluminum Base	Black Composite Base
Model #	1212	1212BLK
Item #	1041212000	1041212100
Shipping Weight	29 lbs.	29 lbs.

Options: 75 different vinyl colors - see upholstery catalog

Foot Ring as an Accessory: Compatible on all 5 leg stools

Part #	Description	Shipping Weight
7901243000	Foot Ring for Leg Joint Comfort	6 lbs.





Exam Stools

Construction Specifications

Construction Specifications

Standard Dimensions	Seats: 15" diameter Polyfoam padding: 3" thick Height Range: 18" - 33"
Materials	Bases: Aluminum or black composite Seats: 75 colors of upholstered vinyl covering polyfoam padding. Clifton/Passaic Stool: 304 stainless steel
Gauge	Clifton Stool Legs: 18GA; Clifton Stool Seat: 14 GA Passaic Stool Legs : 18 GA
Welding	Clifton/Passaic Stool: All welding by heliarc method and exposed welds are ground smooth
Finish	Clifton/Passaic Stool: Exposed surfaces are free from pit marks, weld seams, scale and are polished with #4 polish to a satin finish
Casters	2" hard rubber casters or 2" twin wheel plastic casters
Notes	<ul style="list-style-type: none"> • MR conditional stool available. See MR conditional catalog • For all vinyl colors, please see our upholstery catalog

Shipping Information

All shipping weights are estimates and may be changed without prior notice. Specifications may be improved and dimensions changed without prior notice. Please contact customer service for estimated shipping costs at info@blickman.com.

BLICKMAN



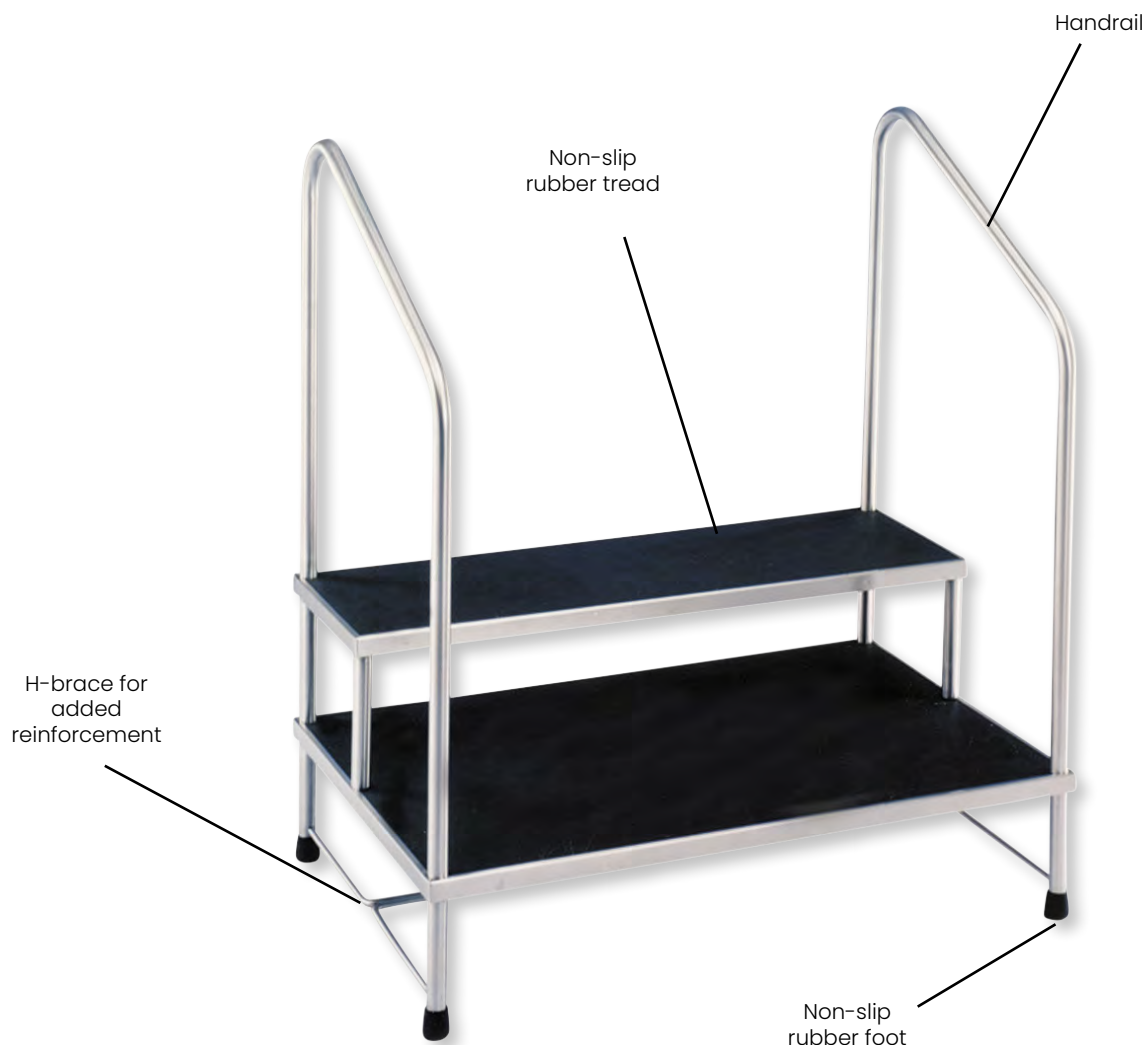
Foot Stools

Safe and sturdy to step up or down

THE BLICKMAN DIFFERENCE

- Whether chrome or stainless steel, our foot stools are high quality, durable, and safe.
- Every foot stool includes a non-slip rubber tread for secure footing and non-slip rubber tips on the stools' feet to secure floor placement.
- For heavy loads, some models include H-brace reinforcement.
- For additional user stability, some models include handrails or allow for the addition of a handrail.

Key Product Features



Foot Stools

One Step

9" HIGH FOOT STOOLS

Description: Our 9" high foot stools come in either chrome or stainless steel and consist of one step 9" off the ground with non-slip rubber treads and feet tips. A 35 3/4" tall handrail for additional support is available for the chrome stool.

All 9" stools have the same dimensions:

Width: 14 1/4" x Height: 9" x Depth: 11 3/8"



Stainless Steel Stool



Chrome Stool

Name	Stainless Steel Stool	Chrome Stool
With Handrail		
Model #	1261	1251
Item #	1011261000	1011251000
Shipping Weight	12 lbs.*	11 lbs.*
Without Handrail		
Model #	1260SS	1250
Item #	1011260000	1021251640
Shipping Weight	8 lbs.	7 lbs.

*Shipping weight with an asterisk is the combined shipping weight of separate parts

Foot Stools

EZ Stacking

OUR EZ Stacking Stool allows you to:

- ✓ Create wider platforms by locking side-to-side
- ✓ Create higher platforms by stacking top-to-bottom
- ✓ Store efficiently and transport easily with our corresponding dolly

EZ STACKING STOOLS



Description: Our EZ stacking stools and dolly are made with our durable stainless steel. The stools are covered with a non-slip rubber tread and feet tips.



EZ Stool Dimensions:
18 7/8" x 6 1/4" x 13 7/8"



Dolly Dimensions:
21 1/2" x 39" x 16 1/2"

Name	EZ Stacking Stool	Dolly
Model #	8862SS	8862SS-D
Item #	1018862000	1018862300
Ship Weight	14 lbs.	20 lbs.

Foot Stools

Construction Specifications

Construction Specifications

Standard Dimensions	1 step: 6 1/4" - 9" high 2 step: Bottom step: 8" high, Top step: 15 3/4" high
Materials	Chrome 304 stainless steel Black non-slip rubber
Gauge	EZ Stacking Stools: 16GA platform, 14GA legs All Stainless Steel Stools: 16GA (Exception: 7757MR-HR and 7761MR-HR have 18GA handrails)
Welding	All welding by heliarc method and exposed welds are ground smooth
Finish	Exposed surfaces are free from pit marks, weld seams, scale and are polished with #4 polish to a satin finish
Casters	Dolly: 3" swivel casters with no brakes

Shipping Information

All shipping weights are estimates and may be changed without prior notice. Specifications may be improved and dimensions changed without prior notice. Please contact customer service for estimated shipping costs at info@blickman.com.

Note for: *1251 Stool* Parts shipped separately to avoid damage and lower costs. Shipping weight with asterisk is the combined shipping weight of separate parts. Some assembly required.

BLICKMAN



Scrub Sinks

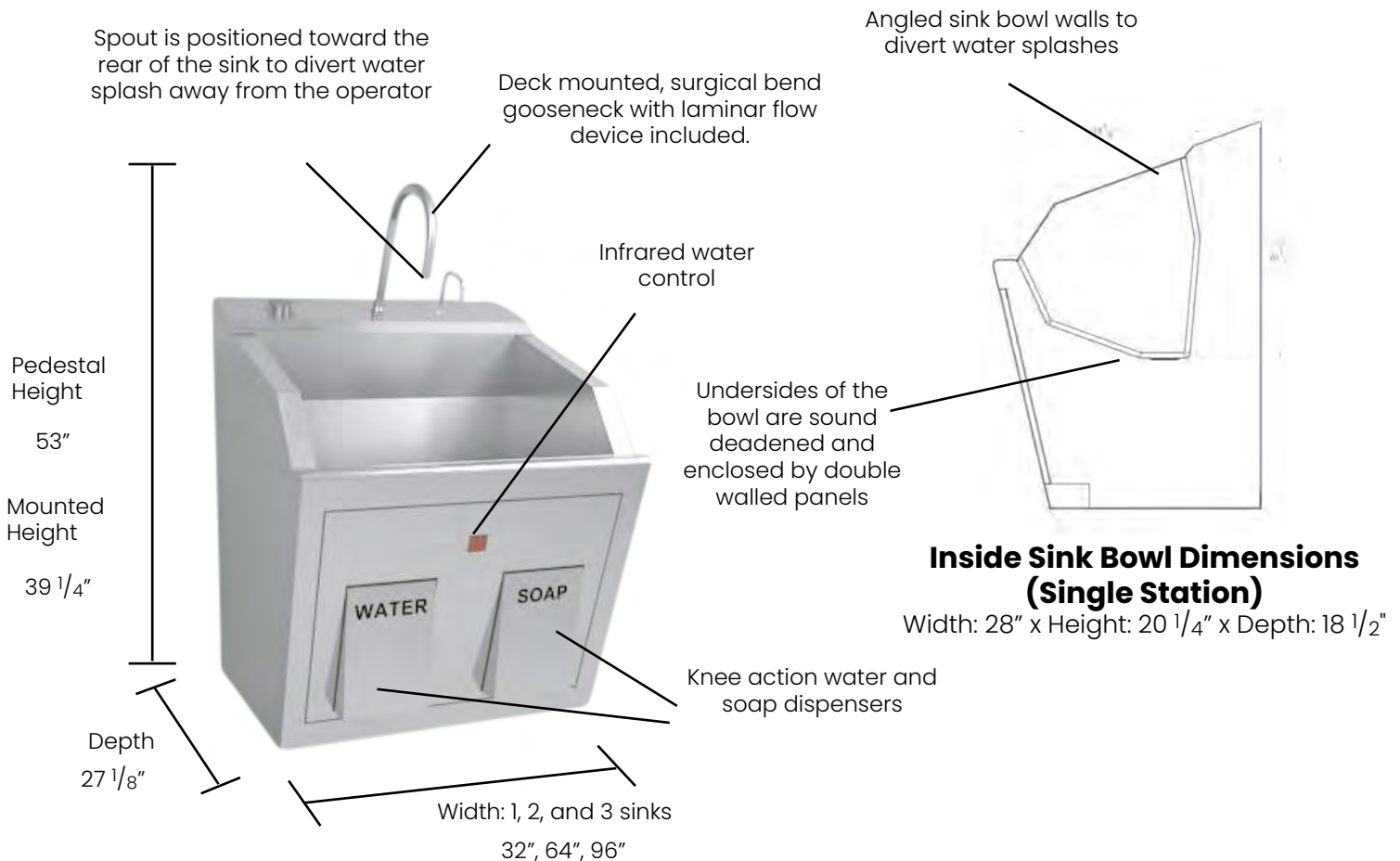
Hands free multi-station operation

THE BLICKMAN DIFFERENCE

Scrub Sinks

- Our Lodi scrub sink models are available with single, dual, and triple stations.
- They have deep sink bowls with sound-deadened enclosed double walled panels that are angled in to divert water splashes along with spouts positioned toward the rear of the sink. Standard gooseneck faucets included.
- All operation options are hands free and have infrared water control and knee-action water and soap dispensers.

Key Product Features



Scrub Sinks

Lodi

LODI SCRUB SINKS

Description: Our Lodi scrub sinks come standard with both infrared water control and knee-action water and soap dispensers. All units are available in either pedestal or wall-mounted configurations. Standard gooseneck faucets included.



Width
32"



Width
64"



Width
96"



Height
53"



Height
39 1/4"

Name	1 Station	2 Stations	3 Stations
Pedestal			
Model #	988ISSP	9882SSP	9883SSP
Item #	1339881P00	1339882P00	1339883P00
Shipping Weight	275 lbs.	420 lbs.	600 lbs.
Wall Mounted			
Model #	988ISSW	9882SSW	9883SSW
Item #	1339881W00	1339882W00	1339883W00
Shipping Weight	215 lbs.	360 lbs.	570 lbs.

Scrub Sinks

Accessories

LODI SCRUB SINK ACCESSORIES

- Factory Installed Options -



Digital Timer



Eyewash

- For Wall Mount Installation -



Chair Carrier
For Wall Mount Installation

# of Stations	One	Two	Three
Part #	4301224751	4301224752	4301224753
Shipping Weight	47 lbs.	119 lbs.	141 lbs.

Scrub Sinks

Construction Specifications

Construction Specifications

Standard Dimensions **Lodi:** (W) 32", 64", 96" x (D) 27 1/4" x (H): 39 1/4", 53"
Internal Sink (Single Station): 28" x 18 1/2" x 20 1/4"

Materials/
Gauge 304 stainless steel
Lodi: Mix of 16GA and 14GA
Double/Triple Station Lodi Scrub Sinks: Plastic Dividers

Welding All welding by heliarc method and exposed welds are ground smooth

Finish Exposed surfaces are free from pit marks, weld seams, scale and are polished with #4 polish to a satin finish

Electrical Available in standard 100/120 VAC input or 220/240 VAC
Units are FDA registered and conform to standards for Safety Medical Electrical Equipment UL 606011 (US) and CSA C22.2 #601.1M90 (Canada)
Units are cord connected with a hospital grade cap

Casters N/A

Shipping Information

All shipping weights are estimates and may be changed without prior notice. Specifications may be improved and dimensions changed without prior notice. Please contact customer service for estimated shipping costs at info@blickman.com.

BLICKMAN



Tables

Adaptable work and prep surfaces

THE BLICKMAN DIFFERENCE

Tables

- Our tables are reinforced with H-braces for stability or include an optional lower shelf for storing supplies. We offer standard dimensions or that can be customized to any size. We also have an optional nested set of up to six tables that can be ordered together or separately.
- Our tables come in a variety of drawer and shelf configurations to store and protect equipment and can include a workspace so you can store and prep your supplies on one efficient and transportable setup in both sterile and non-sterile environments.

Key Product Features



NESTED TABLES

Description: Our nested instrument tables are space saving alternatives with a unique design that requires a mere 8 square feet of floor space, but yields 31 square feet of usable work space. All tables travel on 3" casters.



Name	Dimensions (WxHxD)	Model #	Item #	Shipping Weight
Complete Set of 6	8 Sq. Ft. of Floor Space 31 Sq. Ft. of Work Space	782ISS	0137821000	255 lbs.

ORDER SEPARATELY

Largest	48" x 42" x 24"	7822SS	0137822000	56 lbs.
Second	44" x 40" x 22"	7823SS	0137823000	52 lbs.
Third	40" x 38" x 20"	7824SS	0137824000	51 lbs.
Fourth	36" x 36" x 18"	7825SS	0137825000	37 lbs.
Fifth	32" x 34" x 16"	7826SS	0137826000	34 lbs.
Smallest	28" x 32" x 14"	7827SS	0137827000	32 lbs.

ANGULAR TABLE

Description: Choose our angular table to have separate left and right work spaces. Add a lower shelf or drawers for additional storage. This 34" tall table is in the safety zone for reduced back stress, and it travels on 3" casters. Select the surface area with dimensions that fit your needs.



Model #	Item #	Description	Width	Depth	Height	Shipping Weight
7862SSA	0147862000	Angular Table	60"	15"	34"	120 lbs.
7863SSA	0147863000	Angular Table	72"	18"	34"	137 lbs.

Custom Dimensions Available Upon Request
Please email us at info@blickman.com

HOWARD & SAWYER TABLES

Description: These tables offer complete 18 gauge, 304 stainless steel construction. They are lightweight, yet extremely durable. Sanitary closed top help prevents bacterial build up. Sealed reinforcing channels provide rigidity. All tables are 34" tall, which is in the safety zone for reduced back stress, and travel on 3" casters. There is a 16" clearance between shelves. Our 4 most common sizes are listed below, however we offer a wide variety of other sizes that you can order by calling our customer service or visiting our website.

Sawyer Table



Howard Table



Table	Sawyer Table			Howard Table		
Dimensions (WxD)	H-Brace			Shelf		
20" x 16"	7840SS	0127840000	28 lbs.	7830SS	0117830000	32 lbs.
30" x 16"	7839SS	0127839000	33 lbs.	7829SS	0117829000	40 lbs.
33" x 18"	7841SS	0127841000	39 lbs.	7831SS	0117831000	47 lbs.
36" x 20"	7842SS	0127842000	42 lbs.	7832SS	0117832000	52 lbs.
36" x 24"	7843SS	0127843000	48 lbs.	7833SS	0117833000	56 lbs.
48" x 20"	7844SS	0127844000	53 lbs.	7834SS	0117834000	66 lbs.
48" x 24"	7845SS	0127845000	56 lbs.	7835SS	0117835000	69 lbs.
60" x 24"	7846SS	0127846000	178 lbs.	7836SS	0117836000	190 lbs.
72" x 24"	7847SS	0127847000	186 lbs.	7837SS	0117837000	210 lbs.

Options: Custom dimensions, 40"H tables, three sided guardrails, and drawers (see Crescent table design).

CRESCENT TABLES

Description: Our crescent table has the same construction as the Howard and Sawyer Instrument tables with the addition of drawers and guard rails. This table includes a large work surface area (36"x 20"), two 4" deep drawers and one optional lower shelf 16" off the ground. This model is 34" tall, which is in the safety zone for reduced back stress, and travels easily on 3" casters.

Customize the surface area dimensions of these models to fit your needs.



Model #	Item #	Description	Width	Depth	Height	Shipping Weight
7856SS	0317856000	Crescent Table (H-Brace)	36"	20"	34"	78 lbs.
7856SS-SH	0317856003	Crescent Table (Shelf)	36"	20"	34"	81 lbs.

Options: Feet: glides, rubber tips, or larger diameter casters

Tables

Utility
Tables

UTILITY TABLES

Description: Our utility tables offer superior construction with a supporting channel underneath the top shelf to enhance its strength. All of our utility tables are 34" tall, which is in the safety zone for reduced back stress, and travel easily on 3" casters.

Shelf Configuration Includes:

- ✓ Two shelves, 17" and 34" off the ground
- ✓ Four sided guardrails for protection

Drawer Configurations Include:

- ✓ A positive stop to prevent accidental drawer removal
- ✓ Ball bearing slides for easy sliding drawers
- ✓ Three sided guardrails for protection (optional four sided guardrails are available)

All of our utility tables are the same dimensions:

Width: 20" x Height: 34" x Depth: 16"



Lower Shelf Clearance:
16"

Lower Shelf Clearance:
11"

Lower Shelf Clearance:
5 1/2"

Lower Shelf Clearance:
4 1/4"

Lowest Drawer Clearance:
11 1/2"

# of Drawers	0	1	2	3	4
Model #	7852SS	7850SS	7754SS	7857SS	7859SS
Item #	0257852000	0217850000	0227754000	0237857000	0247859000
Shipping Weight	32 lbs.	46 lbs.	59 lbs.	72 lbs.	82 lbs.

Options: Feet: glides, rubber tips, or larger diameter casters, four sided guard rails on drawer models

UTILITY TABLES

Description: Our work tables are designed for use as prep tables. They are heavy duty with large surface areas designed for use in sterile and non-sterile environments. The smallest table dimensions use four legs, and all other larger dimensions use six legs. All of our work tables are 36" tall, which is in the safety zone for reduced back stress, and come standard with bullet feet. Rubber tips, casters, and gliders are available as alternative options.

Customize the surface area dimensions of these models to fit your needs.



Model #	Item #	Description	Width	Depth	Height	Shipping Weight
H-Brace						
CSDT6830	0336830000	Work Table	68"	30"	36"	210 lbs.
CSDT8036	0338036000	Work Table	80"	36"	36"	300 lbs.
CSDT9244	0339244000	Work Table	92"	44"	36"	390 lbs.
Shelf						
CSDT6830S1	0336830100	Work Table	68"	30"	36"	260 lbs.
CSDT8036S1	0338036100	Work Table	80"	36"	36"	355 lbs.
CSDT9244S1	0339244100	Work Table	92"	44"	36"	435 lbs.

Options: Feet: glides, rubber tips, or larger diameter casters

Custom Designs Available Upon Request

Please email us at info@blickman.com

STATIONARY TABLE OPTIONS

Drawers

Description: For added storage, add drawers beneath any tabletop.



**contact us for available drawers and sizing*

Guardrails

Description: For added placement security, add guardrails to any tabletop.



Custom Designs Available Upon Request

Please email us at info@blickman.com

Tables

Options

STATIONARY TABLE OPTIONS

Feet Options

Rubber Tips | Casters | Gliders



Custom Designs Available Upon Request
Please email us at info@blickman.com

Tables

STATIONARY TABLE
Construction
Specifications

Construction Specification

Universal Dimensions	Custom dimensions available on all tables. Please email us at info@blickman.com .
Materials	304 stainless steel
Gauge	Tables: 1 1/4" tube legs, 18GA table top Utility Tables: 1" Diameter 18GA tube legs, 18GA top & body Work Tables: 1 5/8", 16GA tube legs, 16GA table top & sub top
Welding	All welding by heliarc method and exposed welds are ground smooth
Finish	Exposed surfaces are free from pit marks, weld seams, scale and are polished with #4 polish to a satin finish
Casters	3" Casters

Custom Dimensions/Designs Available Upon Request

Please email us at info@blickman.com

Shipping Information

All shipping weights are estimates and may be changed without prior notice. Specifications may be improved and dimensions changed without prior notice. Please contact customer service for estimated shipping costs at info@blickman.com.

BLICKMAN



Utility Carts

Effortless transport

THE BLICKMAN DIFFERENCE

- Our utility carts are ideal for transporting equipment which needs to be used in various areas of your facility. We offer light duty, medium duty, and heavy duty options to suit all of your needs.
- Common features include a push handle, open construction for easy access, guardrails for securing contents, and 4" swivel casters for easy maneuverability.
- They contain two or three solid stainless steel shelves to provide ample storage space.
- The stainless steel construction allows for easy cleaning and sanitizing, while resisting corrosion and stains.
- We also offer a folding utility cart with wire baskets for any application such as transport of mail and supplies.

Key Product Features



Utility Carts

Light Duty

FOLDING UTILITY CART

Description: Our folding utility cart is versatile enough for any application such as movement of mail and supplies. Choose any combination of 6" or 12" deep wire baskets to complete your cart. The metal frame is designed for easy assembly and folds for storage. Rubber stoppers support and protect the wire racks and provide a quiet ride on four, 3" hard rubber casters.

Folding Utility Cart Dimensions:

Width: 29 1/4" x Height: 38 1/2" x Depth: 19 1/2"



6" Wire Basket (2441)

Item #: 2422441000



12" Wire Basket (2442)

Item #: 2422442000

Name	Model #	Item #	Shipping Weight
Kit with 6" + 12" Baskets	2440 KIT	24224400KT	33 lbs.
Kit with Two 6" Baskets	2440 6 KIT	24224401KT	31 lbs.
Kit with Two 12" Baskets	2440 12 KIT	24224402KT	35 lbs.

ORDER SEPARATELY

Folding Frame	2440	2422440000	21 lbs.
6" Wire Basket	2441	2422441000	5 lbs.
12" Wire Basket	2442	2422442000	6 lbs.

Utility Carts

Light Duty

LIGHT DUTY CARTS

Description: Our light duty 7534 utility cart comes standard with three shelves and a push handle. The top two shelves have three sides and an open front to slide in equipment with ease while also securing supplies. The bottom shelf has no sides for easy access to materials. We offer optional designs with additional guardrails.

Our light duty carts have the same dimensions:

Width: 28 1/4" x Height: 35 3/4" x Depth: 16"



Top Shelf: Three Sided Shelf with Open Front Edge
Middle Shelf: Three Sided Shelf with Open Front Edge
Bottom Shelf: Open Shelf



Top Shelf: Three Sided Shelf with Open Front Edge
Middle Shelf: Three Sided Shelf with Front Guardrail
Bottom Shelf: Shelf with Four Guardrails



Top Shelf: Three Sided Shelf with Front Guardrail
Middle Shelf: Three Sided Shelf with Front Guardrail
Bottom Shelf: Shelf with Four Guardrails

Name	Light Duty Utility Cart	Light Duty Utility Cart with 5 Guardrails	Light Duty Utility Cart with 6 Guardrails
Model #	7534SS	7534SS-GR	7534SS-GR4
Item #	2427534002	2427534000	2427534004
Shipping Weight	30 lbs.	30 lbs.	30 lbs.

Custom Designs Available Upon Request
 Please email us at info@blickman.com

Utility Carts

Medium/Heavy Duty

MEDIUM DUTY CARTS

Description: Our medium duty utility carts each come with three solid stainless steel shelves and travel on 4" swivel casters. Choose between our design that includes four sided shelves and width-wise handles or our design that includes open shelving and depth-wise handles.



Dimensions: 27 1/2" x 40" x 18 1/8"



Dimensions: 25" x 16 1/2" x 35 3/4"

Name	Side Rails Medium Duty Cart	End Rails Medium Duty Cart
Model #	7535SS	7536SS
Item #	2427535000	2427536000
Shipping Weight	47 lbs.	40 lbs.



Dimensions: 41 3/4" x 40" x 19 1/4"

HEAVY DUTY CART

Description: Our heavy duty utility cart comes with two solid stainless steel shelves with four sides each and travels on 5" swivel casters. Easy maneuverability with angled pushhandles.

Name	Heavy Duty Cart
Model #	7537SS
Item #	2427537000
Shipping Weight	43 lbs.

Custom Designs Available Upon Request

Please email us at info@blickman.com

Utility Carts

Construction Specifications

Construction Specifications

Universal Dimensions

Light Duty: Width: 28 1/4" x Height: 35 3/4" x Depth: 16"

Materials

Stainless steel
Rubber bumper handles on 7534SS Carts

Gauge

Light Duty: 20GA & 18GA
Medium/Heavy Duty: 16GA

Welding

All welding by spot and heliarc methods and exposed welds are ground smooth

Finish

Exposed surfaces are free from pit marks, weld seams, scale and are polished with a #4 polish to a satin finish

Casters

4" Swivel Casters

Shipping Information

All shipping weights are estimates and may be changed without prior notice. Specifications may be improved and dimensions changed without prior notice. Please contact customer service for estimated shipping costs at info@blickman.com.

Custom Designs Available Upon Request

Please email us at info@blickman.com

BLICKMAN



Warming Cabinets

Reliable Temperature Control

THE BLICKMAN DIFFERENCE

- We maintain the broadest line of warming cabinets in the market. Our blanket and fluid warming cabinets include freestanding, single chamber, dual chamber, tabletop, under-counter, and recessed models (including pass-through versions with doors on front and back).
- All of our models are offered with the choice of glass or stainless steel doors at the same price. Our glass door versions have wide windows designed to allow medical professionals to see all solutions and blankets at a glance, unlike the narrower porthole openings in competing models, so you never come up short of supplies in critical moments.
- Our warming cabinets allow for heat variances between 90° and 160° Fahrenheit. Temperatures remain within +/- 1° Fahrenheit of set point with virtually no leakage into adjoining chambers or outside area.
- The warming fan is located at the top interior of the cabinet allowing for improved heat circulation (no hot/cold spots) and frees up the bottom shelf surface to store more blankets and/or solutions.
- Our touch screen and digital control panels allow O.R. managers to lock the warming cabinet settings with a key or passcode to ensure recommended temperature levels are maintained and that the facility meets all requirements.
- Unlike with cumbersome, "meat locker" handles on competing models, our warming cabinets allow for hands free operation. Our warming cabinets comes standard with self-closing, adjustable tension, magnetic gasket doors. If your arms are full, simply open the door with your elbow and then the door will slowly close on its own.

Key Product Features

Sloped top available for freestanding models to prevent dust collection

Dual chamber models enable you to heat solutions and blankets simultaneously in their respective recommended temperatures

Wide glass window designed to let medical professionals see all solutions and blankets at a glance

Free standing and recessed options available for tall models



www.blickman.com

Touch Screen Control Panel



Digital Screen Control Panel



Universal Controller Features:

- Visual/audible alarm
- Digital adjustments
- Calibration due date reminder
- Graphical temp. trend view
- Set temp. "lock out"
- Lost passcode view
- Temp. data recorder w/ real time clock

Self-closing, magnetic gasket, adjustable tension doors afford convenient, hands free opening and closing

Warming Cabinets

Freestanding

Description: Our freestanding cabinets come in either single or dual chamber configurations with open adjustable shelf design for flexibility and expanded use. The doors come in either glass or stainless steel and lock to secure contents. Each unit comes standard with three perforated stainless steel shelves and integrated casters for ease of mobility.

Dimensions

Width: 30" x Height: 74 1/2" x Depth: 26 5/8"



Electrical: Amps: 7.5 | Total Wattage: 750

Electrical: Amps: 15 | Total Wattage: 1500

Name	Single Chamber		Dual Chamber	
	Glass Doors			
Controller Type	Touch Screen	Digital Screen	Touch Screen	Digital Screen
Model #	8921TG	7921TG	8924TG	7924TG
Item # Shipping	14B8921243	14B7921243	14B8924243	14B7924243
Weight	437 lbs.	437 lbs.	500 lbs.	500 lbs.
	Solid Doors			
Controller Type	Touch Screen	Digital Screen	Touch Screen	Digital Screen
Model #	8921TS	7921TS	8924TS	7924TS
Item # Shipping	14B8921200	14B7921200	14B8924200	14B7924200
Weight	437 lbs.	437 lbs.	500 lbs.	500 lbs.

Options: No Casters, sloped tops

Warming Cabinets

Recessed

Description: Our recessed warming cabinets are designed for built-in installation. Single chamber glass door, solid door, and passthrough models available. Three perforated stainless steel shelves come standard in these models.

Dimensions

Width: 30" x Height: 60" x Depth: 20 5/8"

Electrical: Amps: 7.5 | Total Wattage: 750

Glass Door



Solid Door



Passthrough



Name	Glass Door		Solid Door		Passthrough	
Controller Type	Touch Screen	Digital Screen	Touch Screen	Digital Screen	Touch Screen	Digital Screen
Model #	SW40TG	SW30TG	SW40TS	SW30TS	SW40TPTGS	SW30TPTGS
Item # Shipping	14BSW40243	14BSW30243	14BSW40200	14BSW30200	14BSW40278	14BSW30278
Weight	320 lbs.	320 lbs.	320 lbs.	320 lbs.	245 lbs.	245 lbs.

Options: Dual chambers, additional shelves.

Note: Passthrough models are available in the following configurations: glass/glass, solid/solid, glass/solid, or solid/glass.

Warming Cabinets

Under Counter

Description: Our under counter warming cabinet is suited for use in limited spaces. It comes with either glass or stainless steel doors, and comes standard with two adjustable perforated stainless steel shelves.

Dimensions

Width: 30" x Height: 35 1/2" x Depth: 26 5/8"

Electrical: Amps: 7.5 | Total Wattage: 750



Name

Single Chamber

	Glass Door		Solid Door	
	Touch Screen	Digital Screen	Touch Screen	Digital Screen
Controller Type	Touch Screen	Digital Screen	Touch Screen	Digital Screen
Model #	8922TG	7922TG	8922TS	7922TS
Item # Shipping	14B8922243	14B7922243	14B8922200	14B7922200
Weight	260 lbs.	260 lbs.	260 lbs.	260 lbs.

Options: Sloped tops

Warming Cabinets

Tabletop

Description: Our tabletop warming cabinets are available in a standard and compact size. They can sit on an existing countertop or on a Blickman mobile stand specifically designed to support our tabletop warmers. They come with either glass or stainless steel doors. One adjustable perforated stainless steel shelf is included in the standard model only.

Dimensions: 30" x 24 1/2" x 26 5/8"
Electrical: Amps: 7.5 | Total Wattage: 750



Dimensions: 24" x 24 1/2" x 20 5/8"
Electrical: Amps: 3.5 | Total Wattage: 350



Name	Standard		Compact	
	Glass Doors			
Controller Type	Touch Screen	Digital Screen	Touch Screen	Digital Screen
Model #	8925TG	7925TG	8927TG	7927TG
Item # Shipping	14B8925243	14B7925243	14B8927243	14B7927243
Weight	215 lbs.	215 lbs.	161 lbs.	161 lbs.
	Solid Doors			
Controller Type	Touch Screen	Digital Screen	Touch Screen	Digital Screen
Model #	8925TS	7925TS	8927TS	7927TS
Item # Shipping	14B8925200	14B7925200	14B8927200	14B7927200
Weight	215 lbs.	215 lbs.	161 lbs.	161 lbs.

To set up a solutions only warming cabinet, these units can easily be programmed by the user to heat only between 90°F and 110°F. Options: Sloped tops for 925 models.

Warming Cabinets

Tabletop Mobile Stand



Description: Our warming cabinet mobile stand allows for our tabletop warming cabinets to become mobilized for transport around your facility. These tables are designed to fit both our standard or compact tabletop warming cabinet dimensions without taking up any extra floor space. It includes three sides to secure warming cabinet placement and an optional shelf with four guardrails is available for additional storage.

For transportation, wrap warming cabinet cable around cleat on the back of the mobile stand.



Cleat in the back to coil power cord during transport.

Table Dimensions

Width: 30" x Height: 34" x Depth: 26"



Name	H-Brace	Shelf
Model #	3026SSH	3026SS
Item #	0123026100	0113026000
Shipping Weight	40 lbs.	50 lbs.



Warming Cabinets

Accessories & Power Consumption

ACCESSORIES



Item	Description	Shipping Weight
14B3018000	Sloped top (30" x 8" x 18") for warming cabinet SW40	28 lbs.
14B3026000	Sloped top (29 7/8" x 10" x 26") for warming cabinets: 8921, 8922, 8924, 8925	38 lbs.



Item	Description	Shipping Weight
14B8924SHF	Warming Cabinet Shelf Kit 30" x 26" with 1" Diameter holes for 8921, 8922, 8924, 8925	78 lbs.
14B8927SHF	Warming Cabinet Shelf Kit 20" x 17 1/2" for 8927	28 lbs.
14BSW40SHF	Warming Cabinet Shelf Kit 30" x 18" for SW40	38 lbs.

POWER CONSUMPTION

Model #	Description	Cubic Feet	KW/Hr.	BTU/Hr.
8921	Single Chamber Tall Warming Cabinet	22.02	0.55	1878
8922	Under Counter Warming Cabinet	9.02	0.35	1195
8924	Dual Chamber Tall Warming Cabinet	18.58	0.78	2664
8925	Standard Tabletop Warming Cabinet	5.05	0.29	990
8927	Compact Tabletop Warming Cabinet	2.87	0.38	1298
SW40	Recessed Warming Cabinet	13.22	0.47	1605

Warming Cabinets

Construction Specifications

Construction Specifications

Standard Dimensions	Free Standing: 30" x 74 1/2" x 26 5/8" Recessed: 30" x 60" x 20 5/8" Table Top: Standard: 30" x 26 5/8" x 24 1/2"; Compact: 24" x 20 5/8" x 24 1/2" Under Counter: 30" x 60" x 20 5/8"
Materials/ Gauge	304 stainless steel 1/4" clear double panel, insulated, tempered sheet glass Perforated Stainless Steel Shelves
Welding	All welding by heliarc method and exposed welds are ground smooth
Finish	Exposed surfaces are free from pit marks, weld seams, scale and are polished with #4 polish to a satin finish
Electrical	Available in standard 100/120 VAC input or 220/240 VAC Units are FDA registered and conform to standards for Safety Medical Electrical Equipment UL 60601I (US) and CSA C22.2 #601.1M90 (Canada) Units are cord connected with a hospital grade cap
Casters	Tall Warming Cabinets: Hidden 3" ball bearing polyolefin casters with zinc finish
Notes	<ul style="list-style-type: none">• TOUCHSCREEN CONTROLLER: LCD display shows actual temperature and set point for each chamber at all times. Control panel components include an On/Off Switch, Keyed Control Temperature Lockout USB port and Touchscreen User Interface.• DIGITAL CONTROLLER: Dual display shows actual temperature and set point for each chamber at all times (each chamber in the double door warmer includes its own digital control system). Control panel components include an ON/OFF Button, UP/DOWN Temperature Touch pad, Alarm Light, Heater Light Indicator, Set/Mute Touch• TEMPERATURE: 90° to 160° Fahrenheit. There is a heater light indicator, digital temperature indicators and an over temperature alarm indicator if the actual temperature exceeds set temperature by 10° Fahrenheit. All units have a visual and audible alarm as well as an automatic safety switch. The units are furnished with tubular heater assemblies and a circulating fan for even heat distribution. From a cold start, a fully loaded cabinet will be heated to the selected temperature in four to six hours.

Shipping Information

All shipping weights are estimates and may be changed without prior notice. Specifications may be improved and dimensions changed without prior notice. Please contact customer service for estimated shipping costs at info@blickman.com.

Contact Us

To place an order or request a quote, go to our website:

<https://www.blickman.com/order-form>

<https://www.blickman.com/request-a-quote-form>

If you have any questions or would like to speak with our customer service department:

Toll Free: (800) 247-5070

Phone: (973) 330-0557

Email: info@blickman.com

Website: www.blickman.com

If you require tech support, please visit our website at www.blickman.com/tech-support or email us directly at techsupport@blickman.com.

OUR PROMISE

For over 125 years, Blickman has been known throughout the healthcare industry for exceptional product quality. We pride ourselves on providing high-end and personalized service to ensure 100% customer satisfaction. If you are not completely satisfied for any reason, we will make it right. All of our equipment is backed by our Limited Lifetime Warranty, so you can be certain that you have made the very best choice for your healthcare facility.



Explore all we have to offer
www.blickman.com



Corporate Office & Headquarters

1099 Wall Street West
Suite 250
Lyndhurst, NJ
07071